

QG-New Site Creation

Sitelink v2 walkthrough for Intelligent Compaction

Sitelink v2 Overview

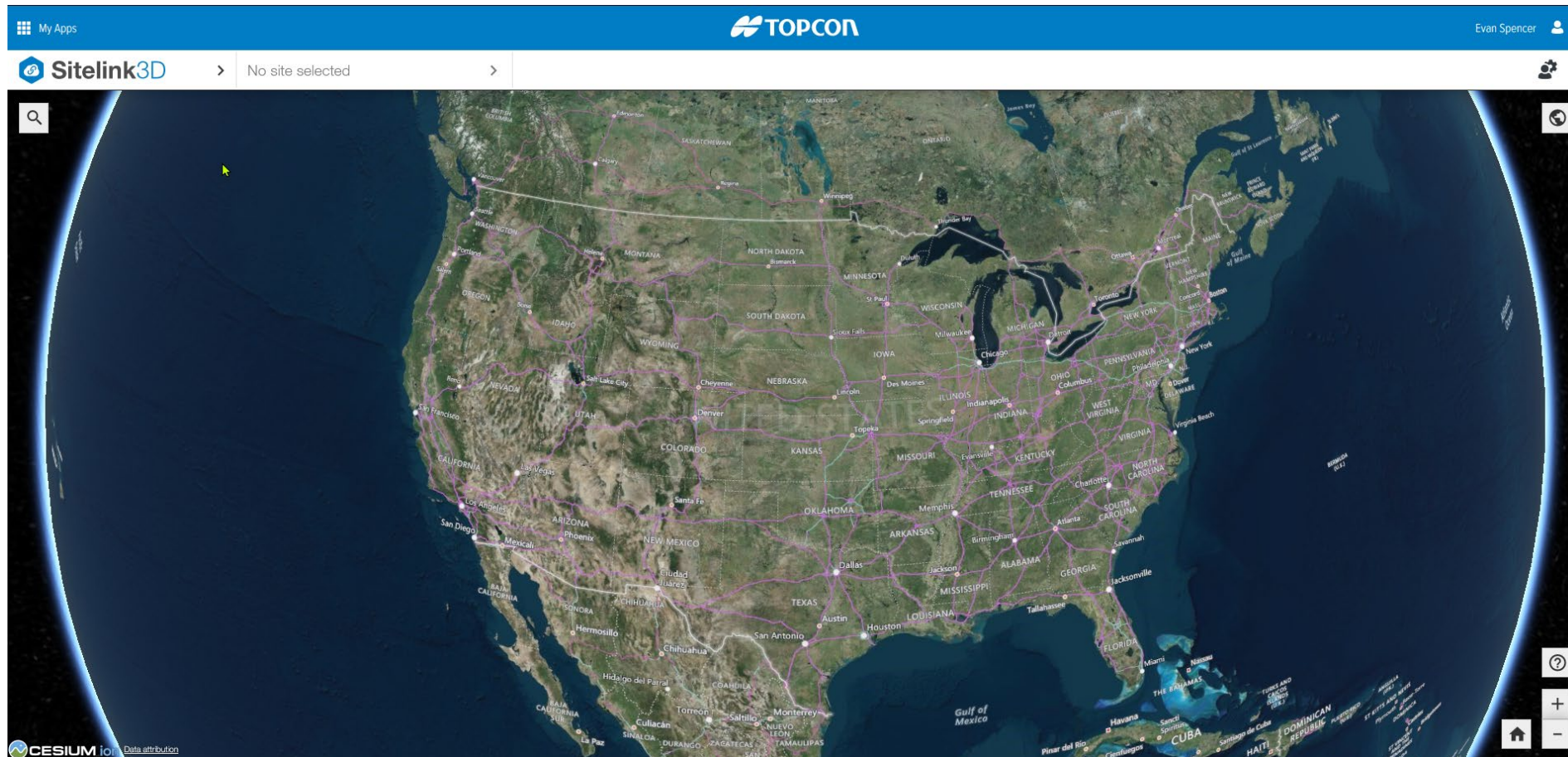
- Sitelink3D v2 is an evolution of the previous versions. Having been entirely redesigned, existing Sitelink3D users will notice some new features and concepts. Sitelink3D v2 now supports the Haul Truck mobile app, 3D-MC v13.x or above, and the RDS Loadmaster system. The Sitelink3D v2 web interface can be accessed at <https://sitelink.topcon.com>

Sitelink v2 Menu Overview



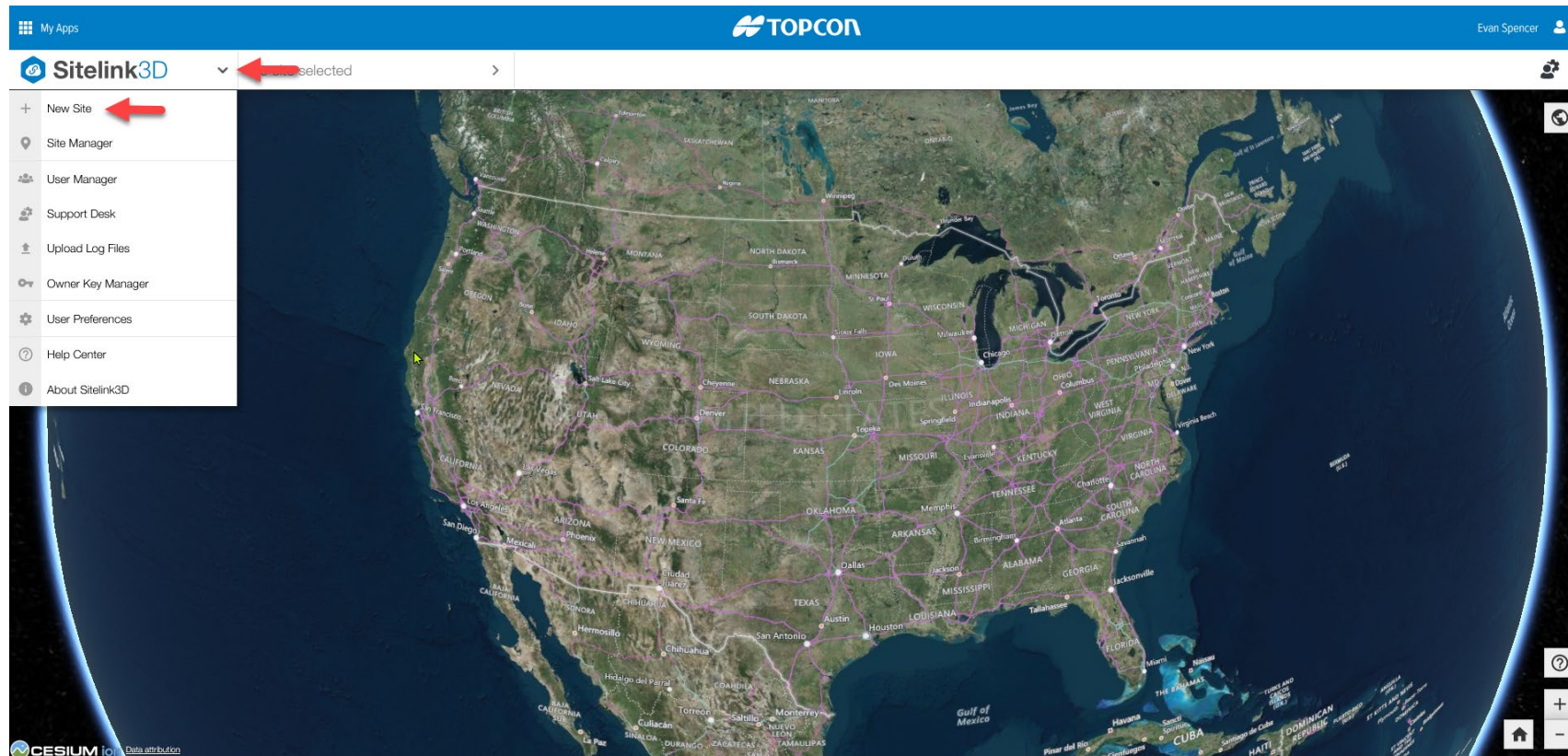
- Sitelink3D: Main Menu is where you select your existing sites, create a new sites or get into each piece of Sitelink v2
- Current Job Menu (390 Demo): This is where you can import job files, create as-builts, color maps, delays, operators, reports, etc.
- Task Folder: Create the tasks for IC the rollers
- Map Overlay: Shows what is visible on the Sitelink2 web portal
- Haul Truck Icon: Live Haul truck statistics
- RDS Icon: Live Weighing Statistics

Sitelink v2 menu overview



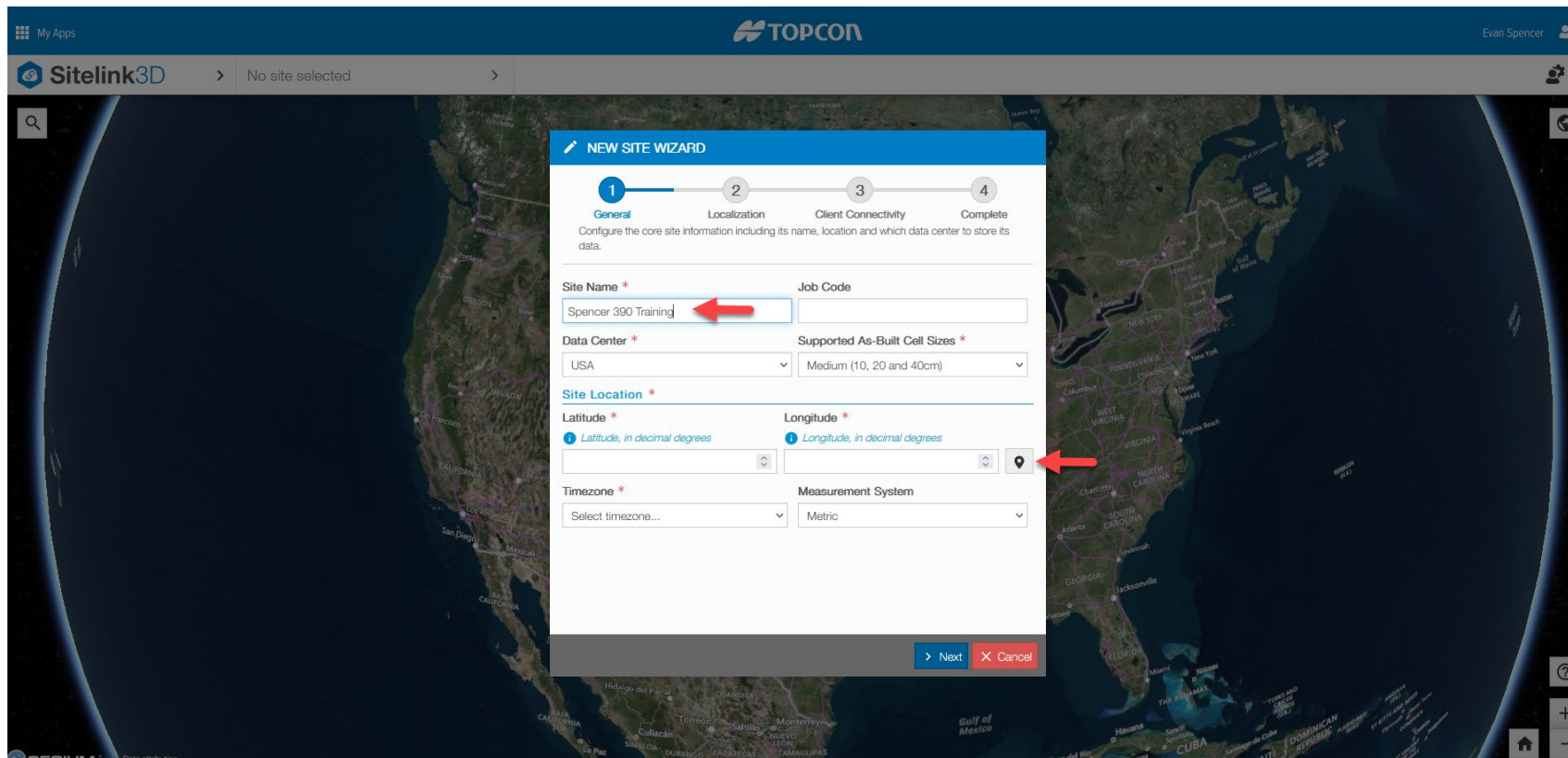
New Site

- Click on the Sitelink3D logo and select new site



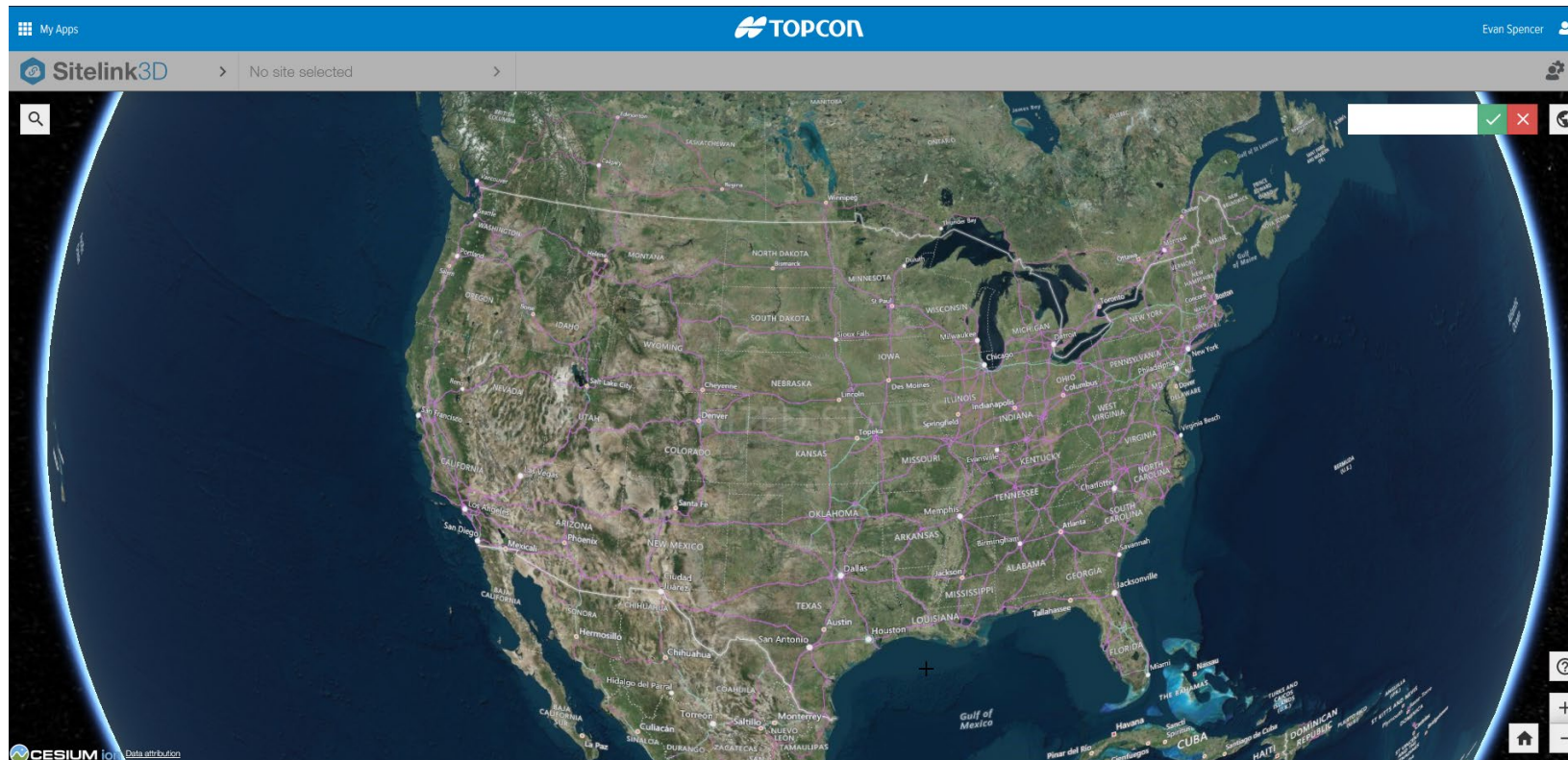
New Site

- In the site wizard, name the site and then click on the location icon to access the map feature. This will allow you to get an estimated location of the project.



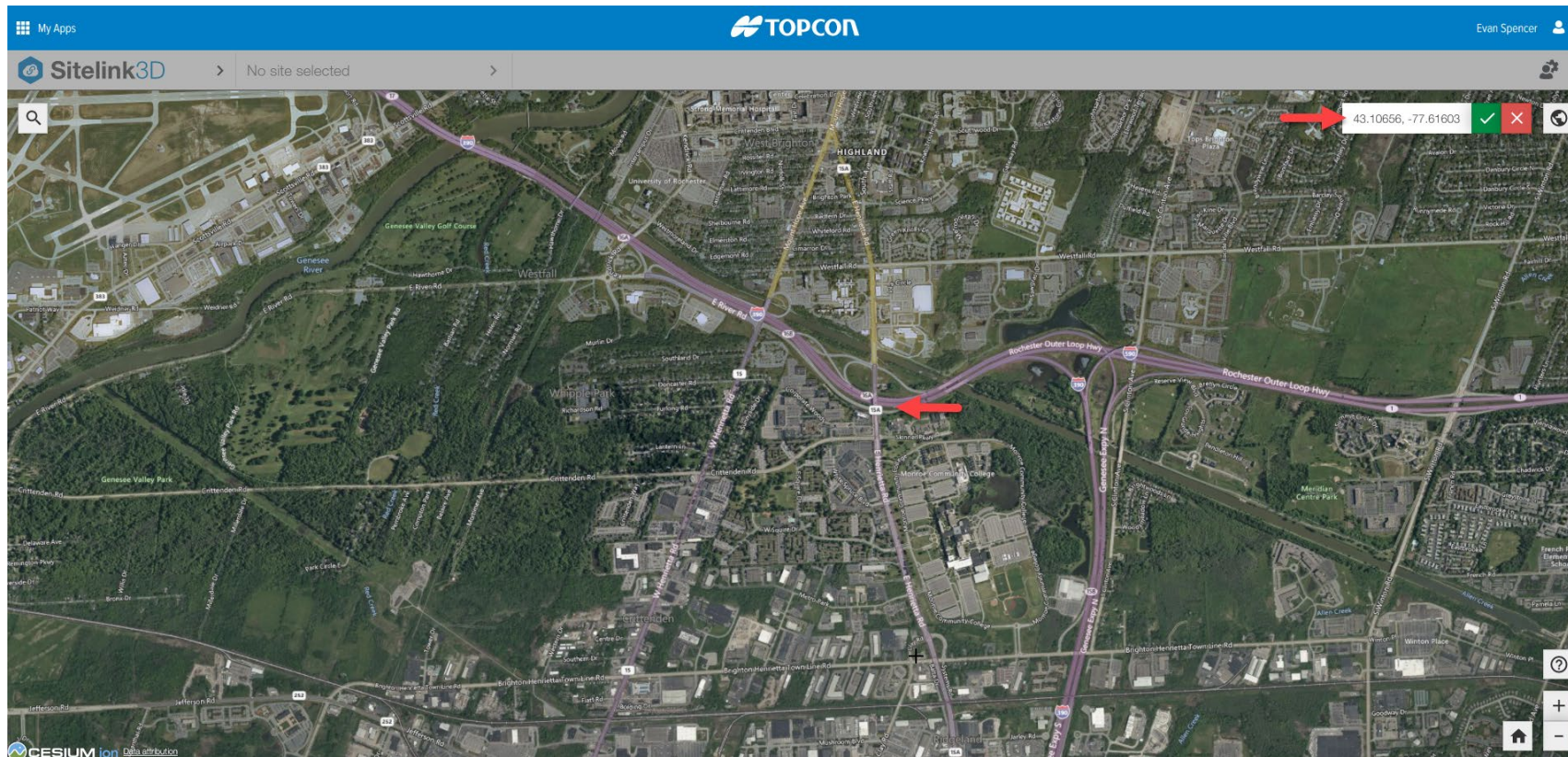
New Site

- Once you click on the location icon, the map will appear. Zoom into the area your project will be.



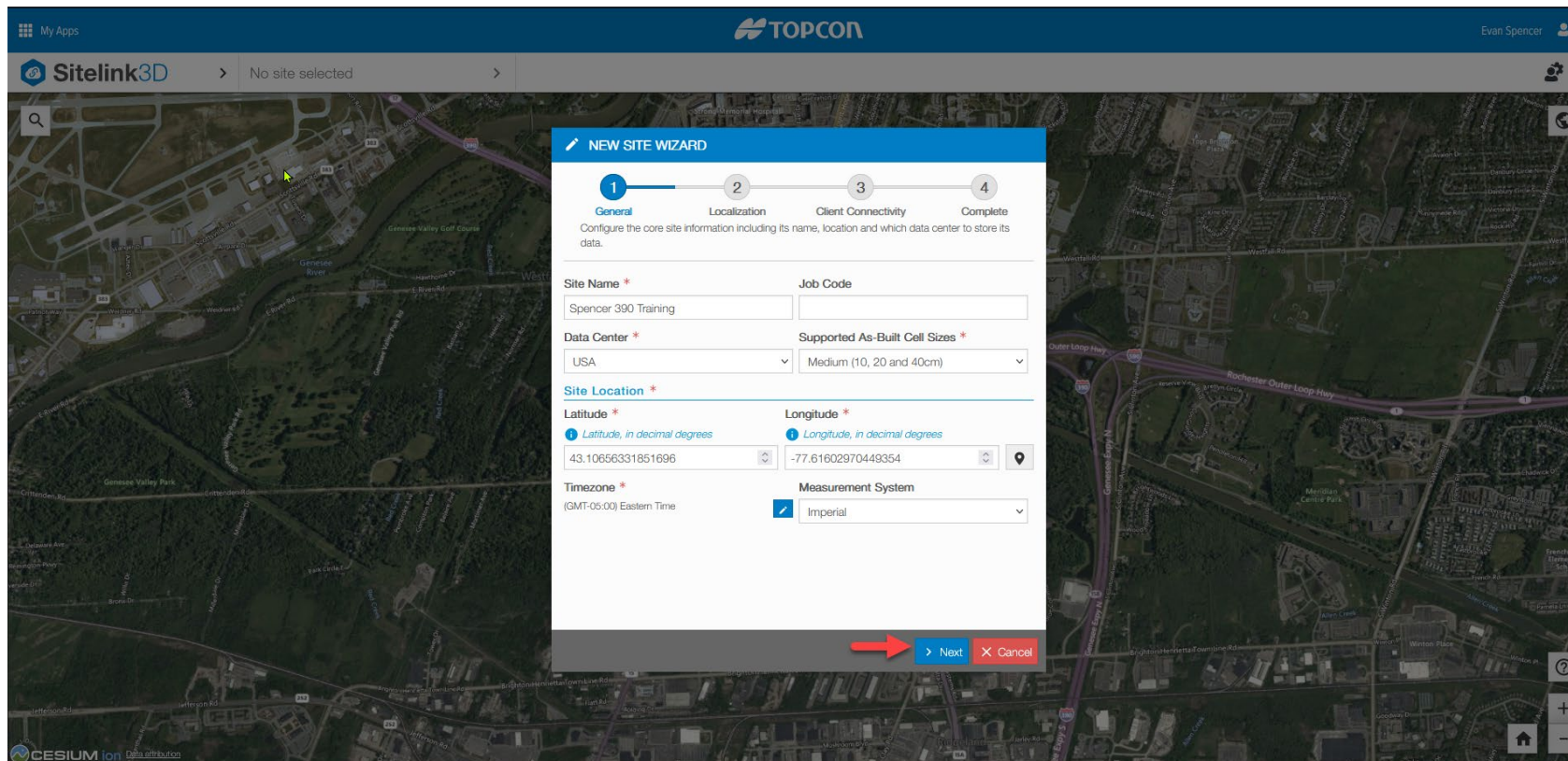
New Site

- Click on the map in the vicinity of your job to establish coordinates. Click the green check next to your coordinates and then click next. (This is for ease of viewing in the SL2 Map view)



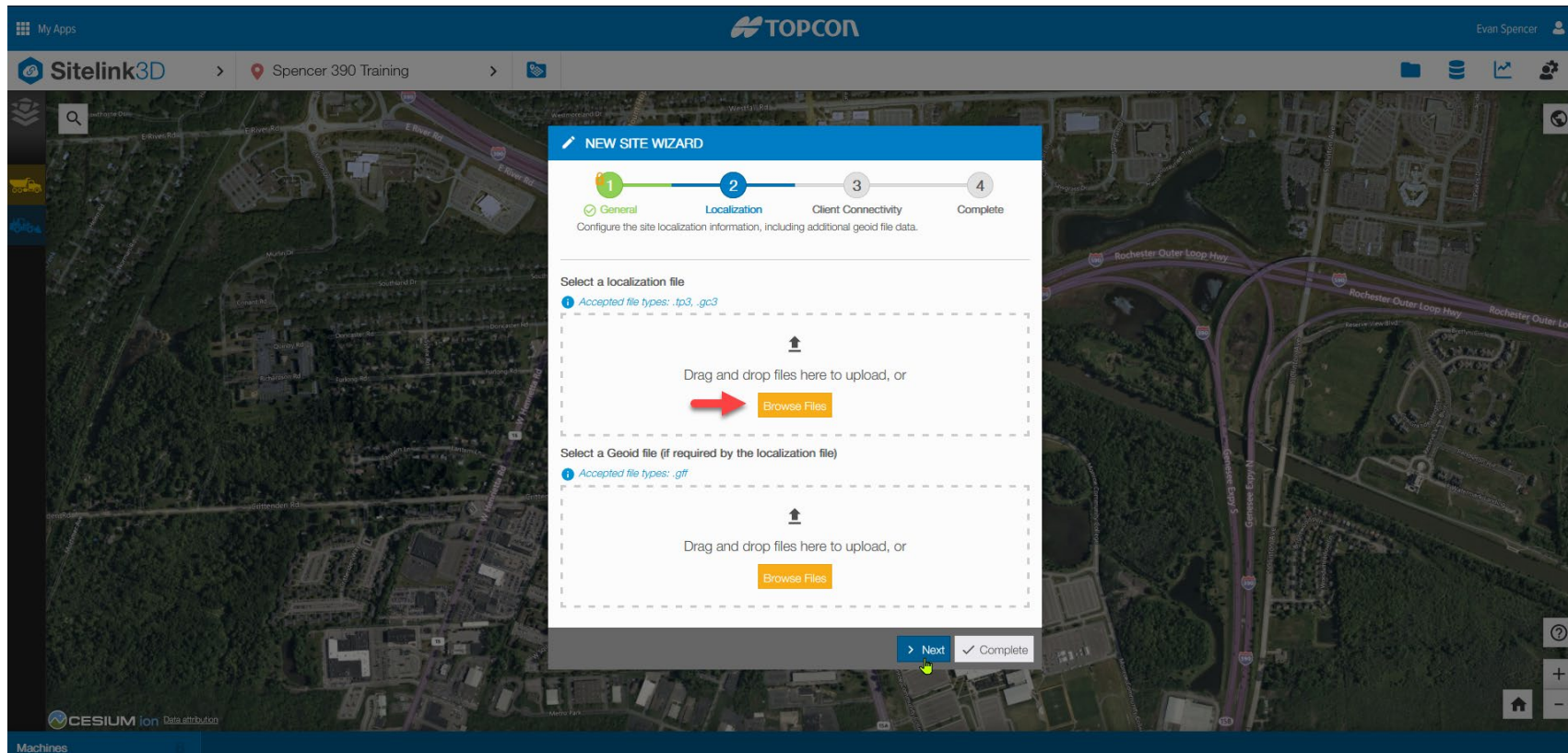
New Site

- After selecting the location, it will take you back to the wizard where you can continue to the project selection



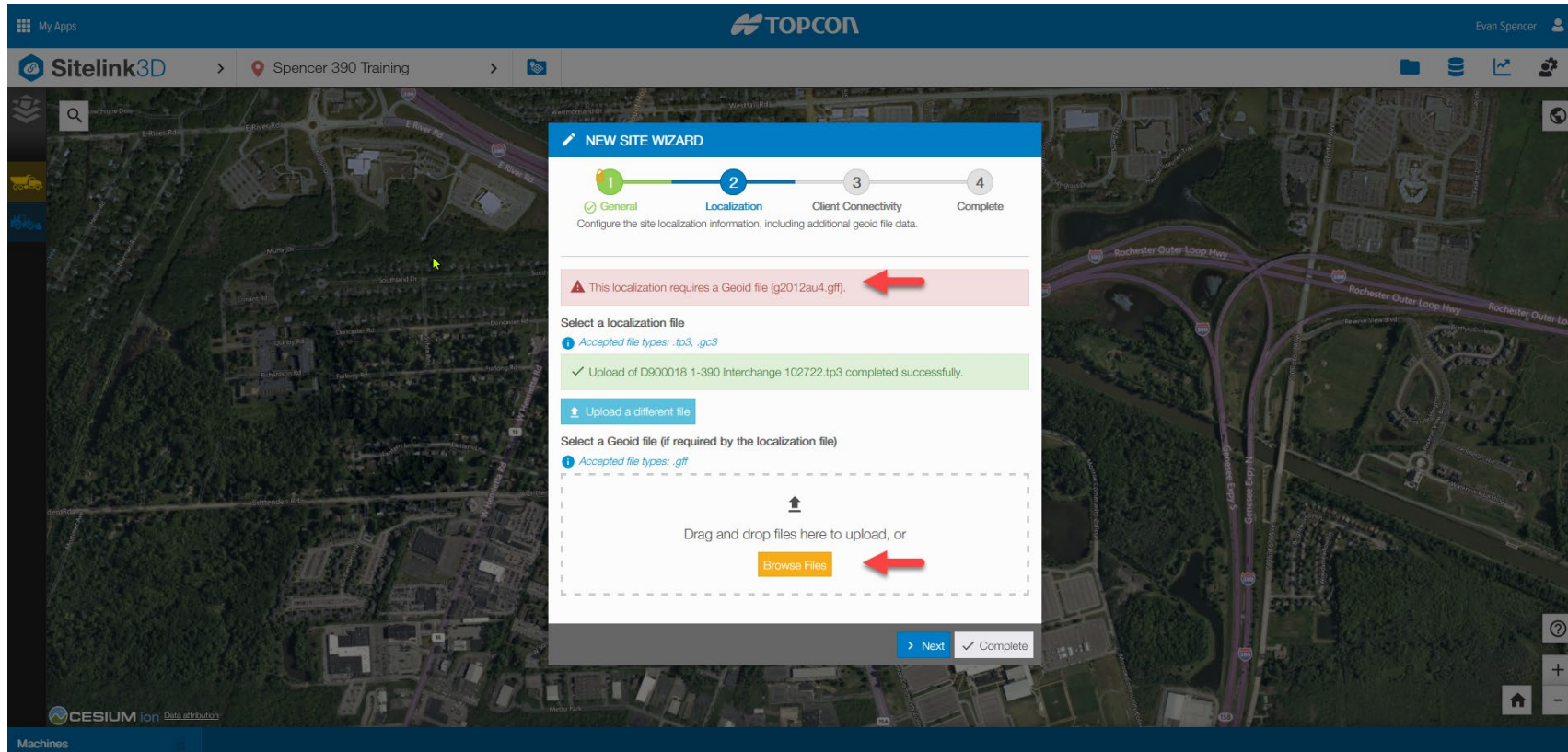
New Site

- Import your .tp3 file by selecting the “Browse Files” tab and find your .tp3 file on your computer. If it is a projection job, you will also need the .gff file of the geoid you used.



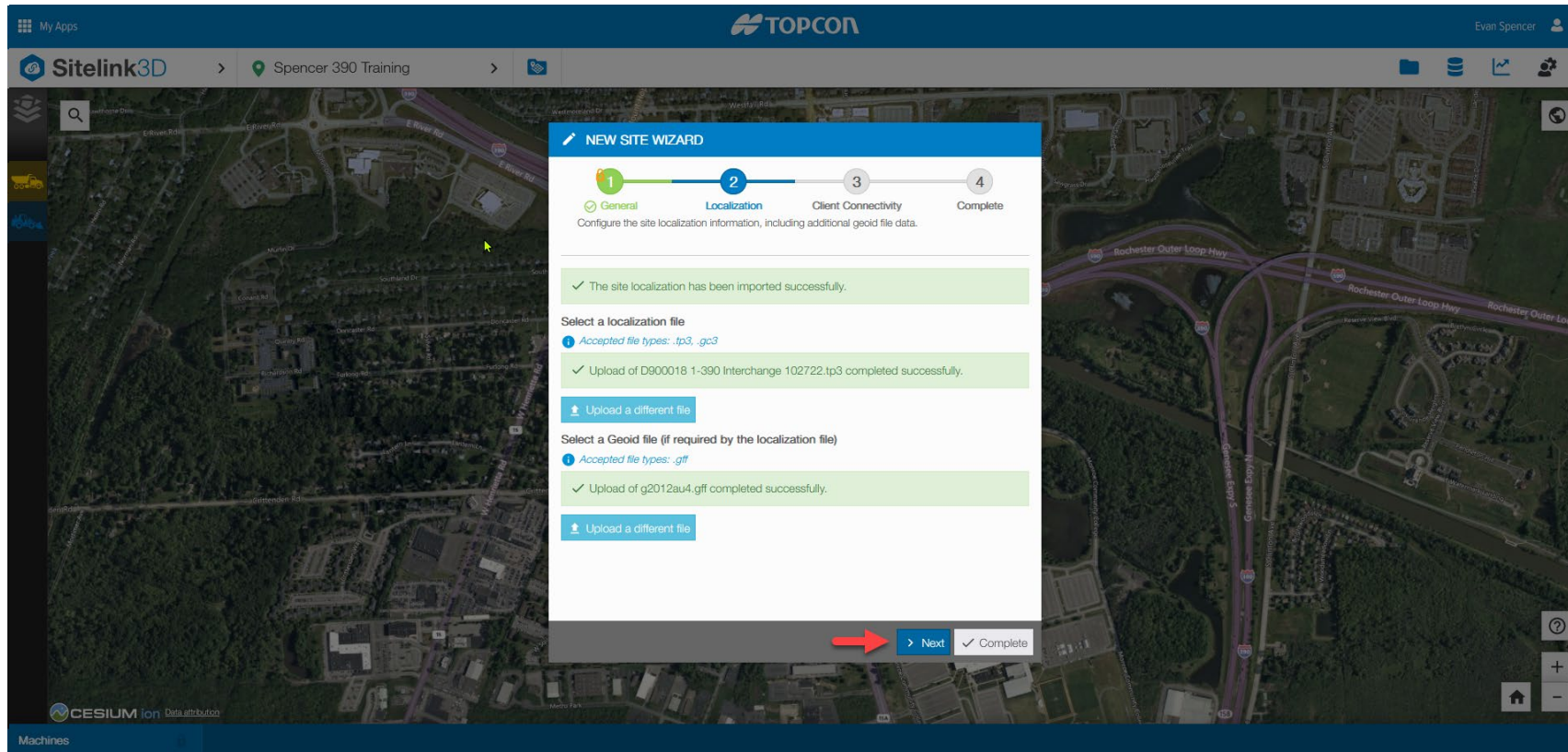
New Site

- In this example a job is selected with a geoid. Notice the error above that says it requires a geoid. Click browse and find the geoid file (.gff) on your computer.



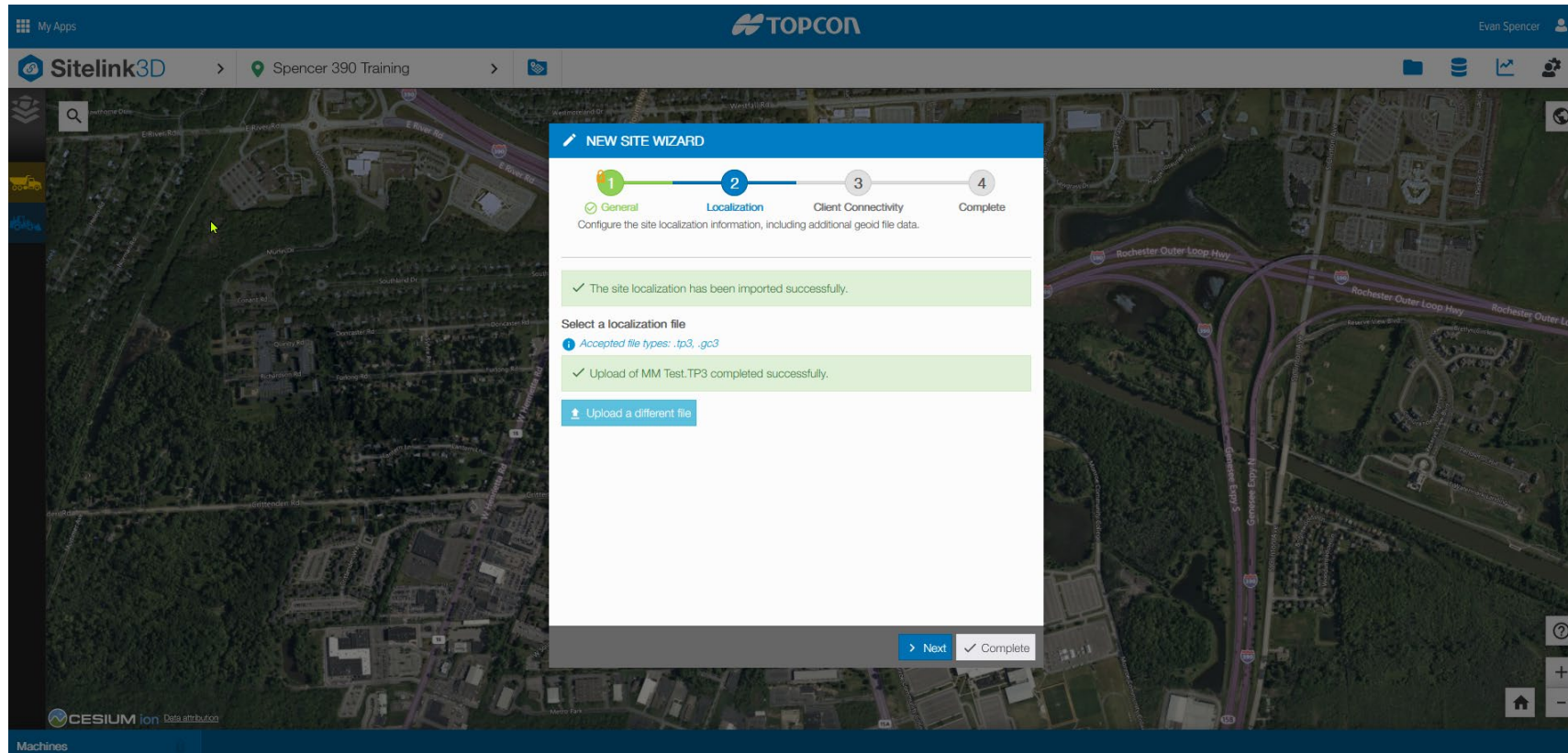
New Site

- Once you have selected your geoid the error will go away, and you can click next.



New Site

- With a localized site it will not ask for geoid



New Site

- THIS IS IMPORTANT, both of these seem optional with a check box however you will not be able to connect to a machine without an access code. Contact details are optional.

My Apps

Sitelink3D > Spencer 390 Training

TOPCON

Evans Spencer

NEW SITE WIZARD

1 General 2 Localization 3 Client Connectivity 4 Complete

Configure the site connectivity settings for client devices wanting to contribute to your site.

Automatically notify clients when they enter a region set as "discoverable".

Site Access Key

Create a Site Access Key for clients to use to connect to your site.

Name * Access Code * Number of days valid *

1

Site Contact Details

Create a Site Contact for display to clients when they connect to your site.

Name * Email * Phone *

Next Complete

New Site

- Name your site key and select an access code that is 6 digits and the days that code will be valid. Enter contact details and then click next.

NEW SITE WIZARD

1 General 2 Localization 3 Client Connectivity 4 Complete

Configure the site connectivity settings for client devices wanting to contribute to your site.

Automatically notify clients when they enter a region set as "discoverable".

Site Access Key

Create a Site Access Key for clients to use to connect to your site.

| Name * | Access Code * | Number of days valid * |
|----------------------|---------------|------------------------|
| Spencer 390 Training | 123456 | 365 |

Site Contact Details

Create a Site Contact for display to clients when they connect to your site.

| Name * | Email * | Phone * |
|--------------|--------------------|------------|
| Evan Spencer | support@topcon.com | 8664TOPCON |

Next Complete

New Site

- Your site is now created.

