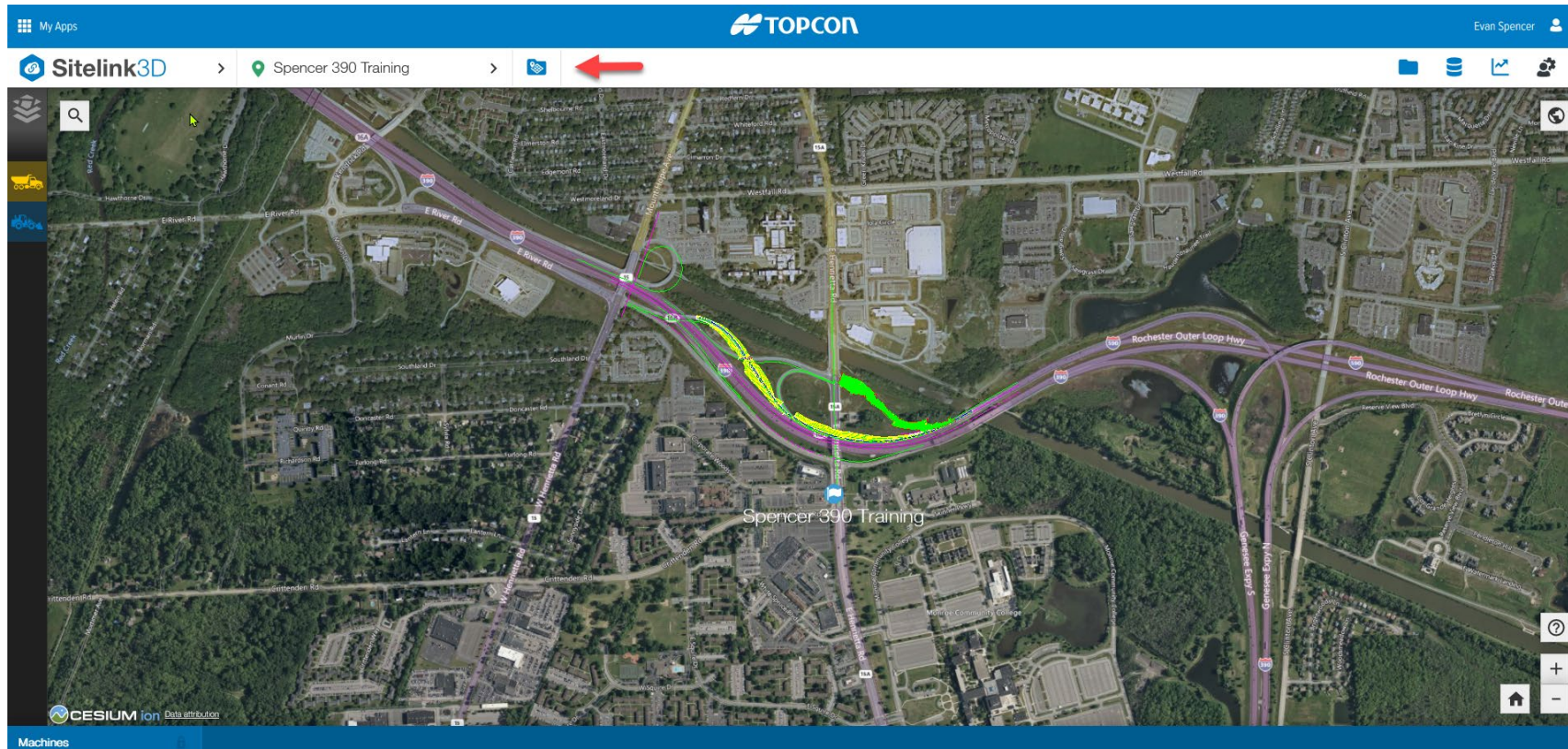


QG-Tasks

Sitelink v2 walkthrough for Intelligent Compaction

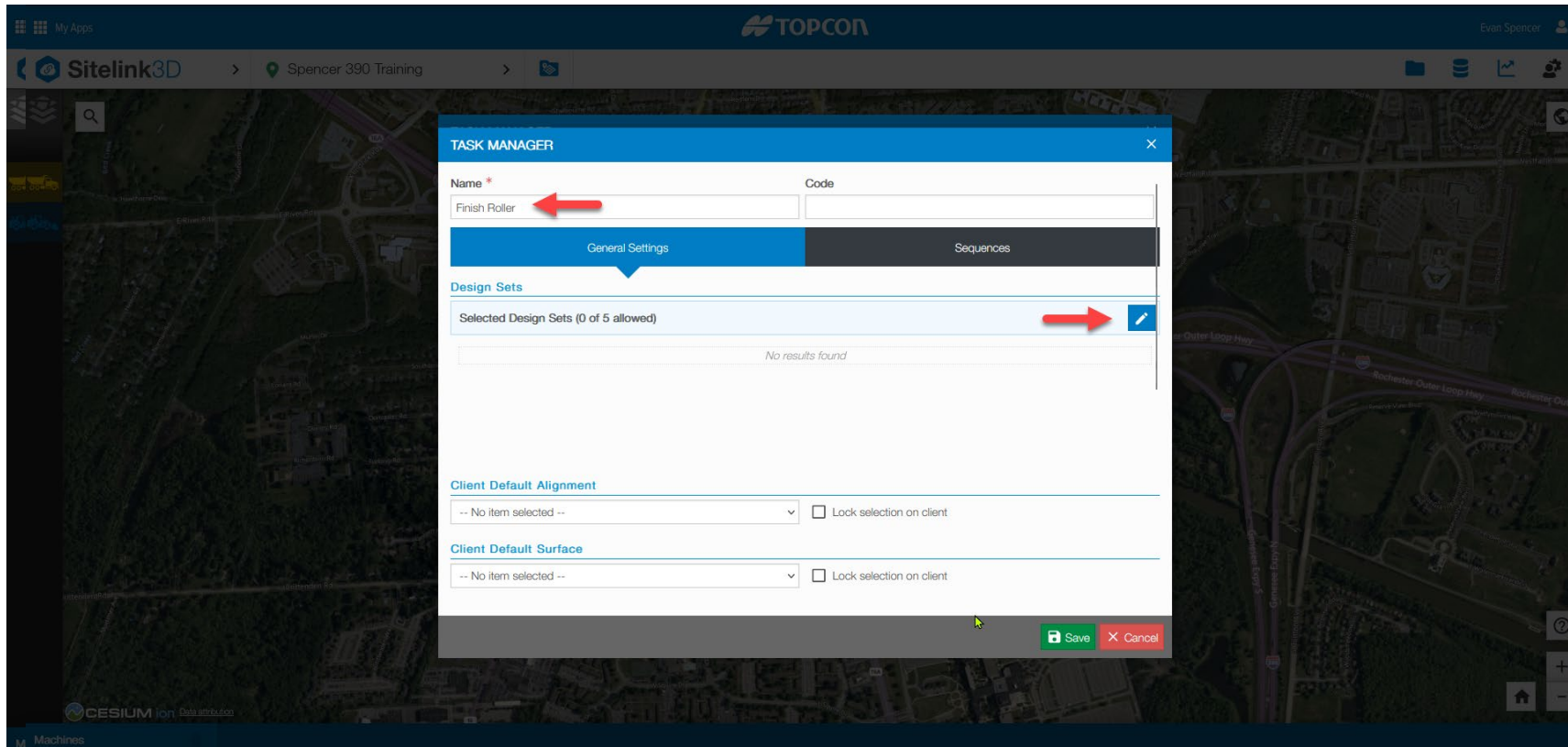
Task Setup

- Once back on the main page the folder icon to the right of the job is your task folder. Select it to set your tasks for the job.



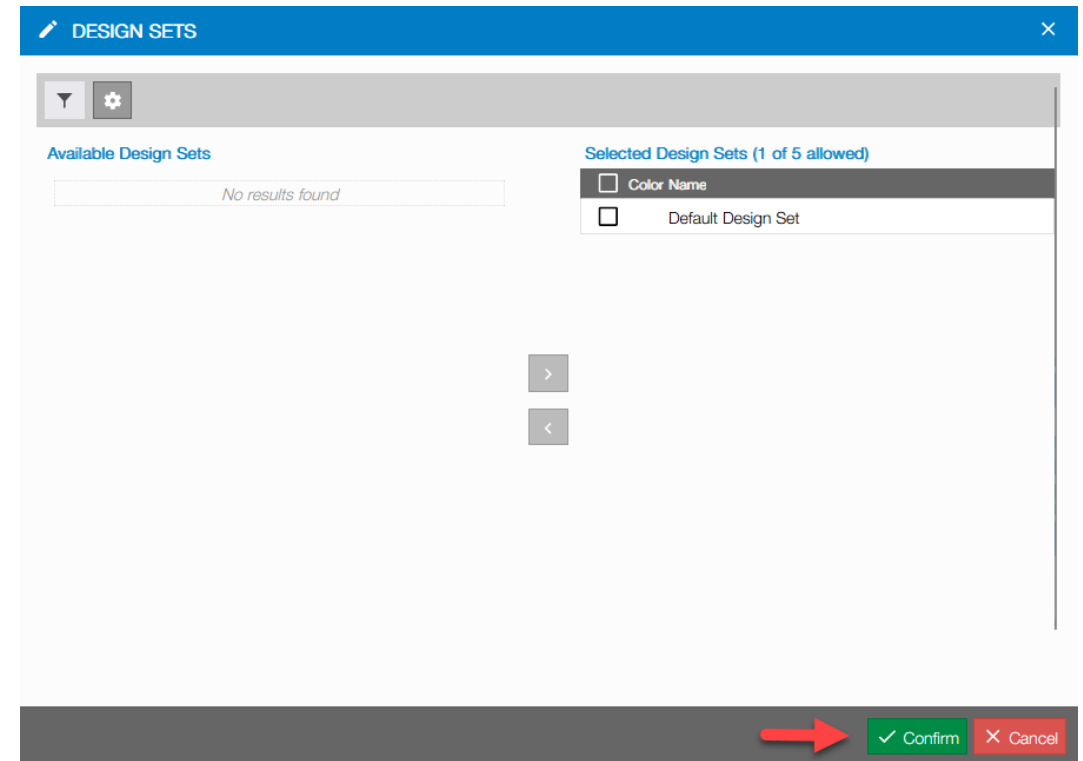
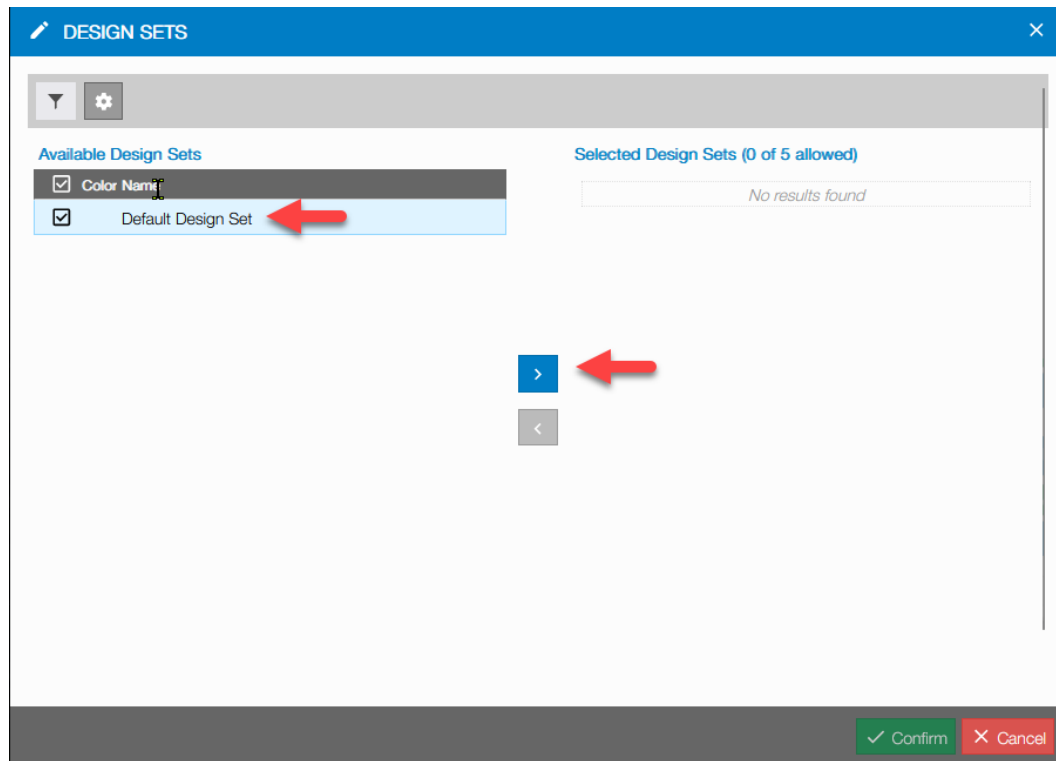
Task Setup

- Name the task and select a default alignment, surface, or elevation offset if needed and then click on the design set.



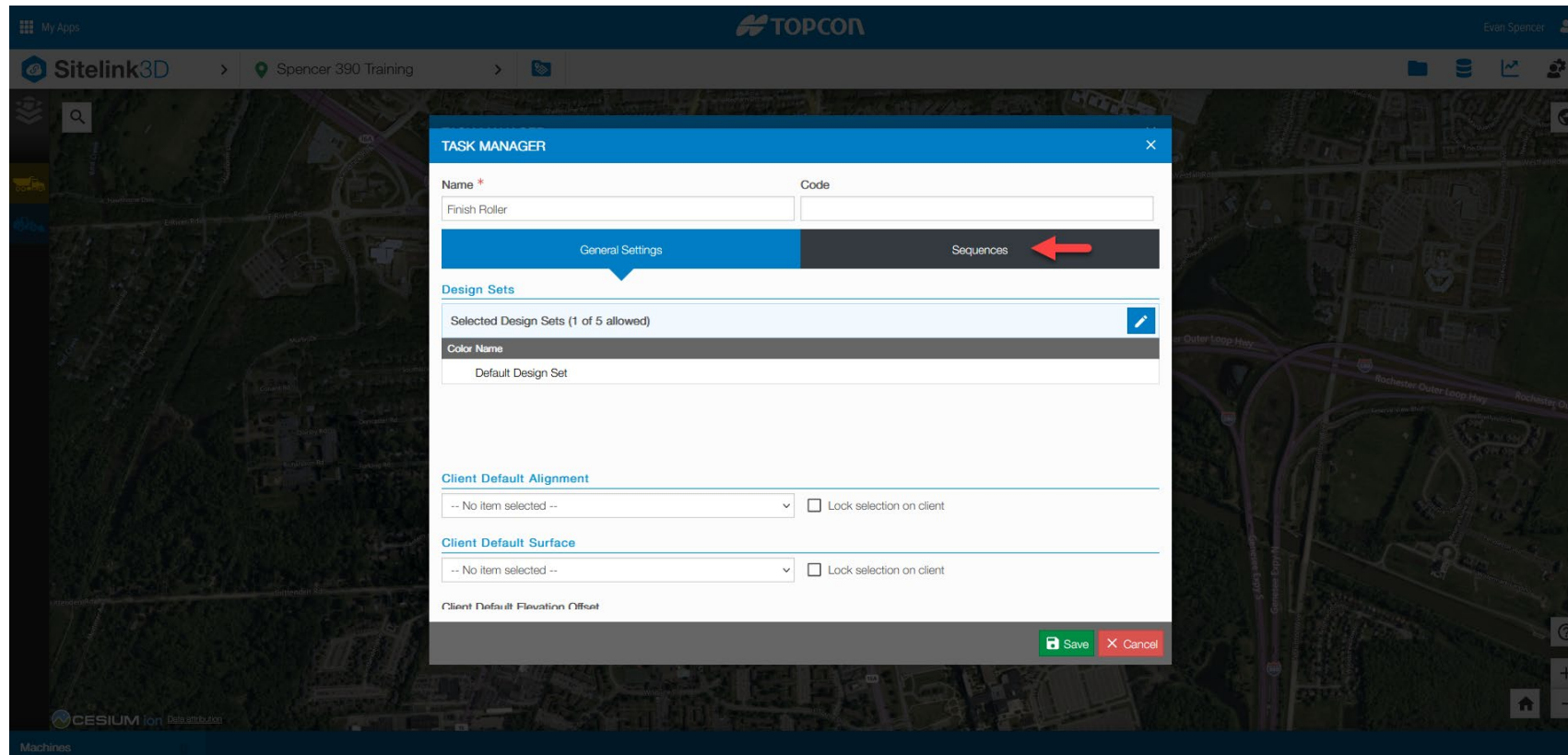
Task Setup

- Select your design set you want to assign to the task and move it over. Click confirm.



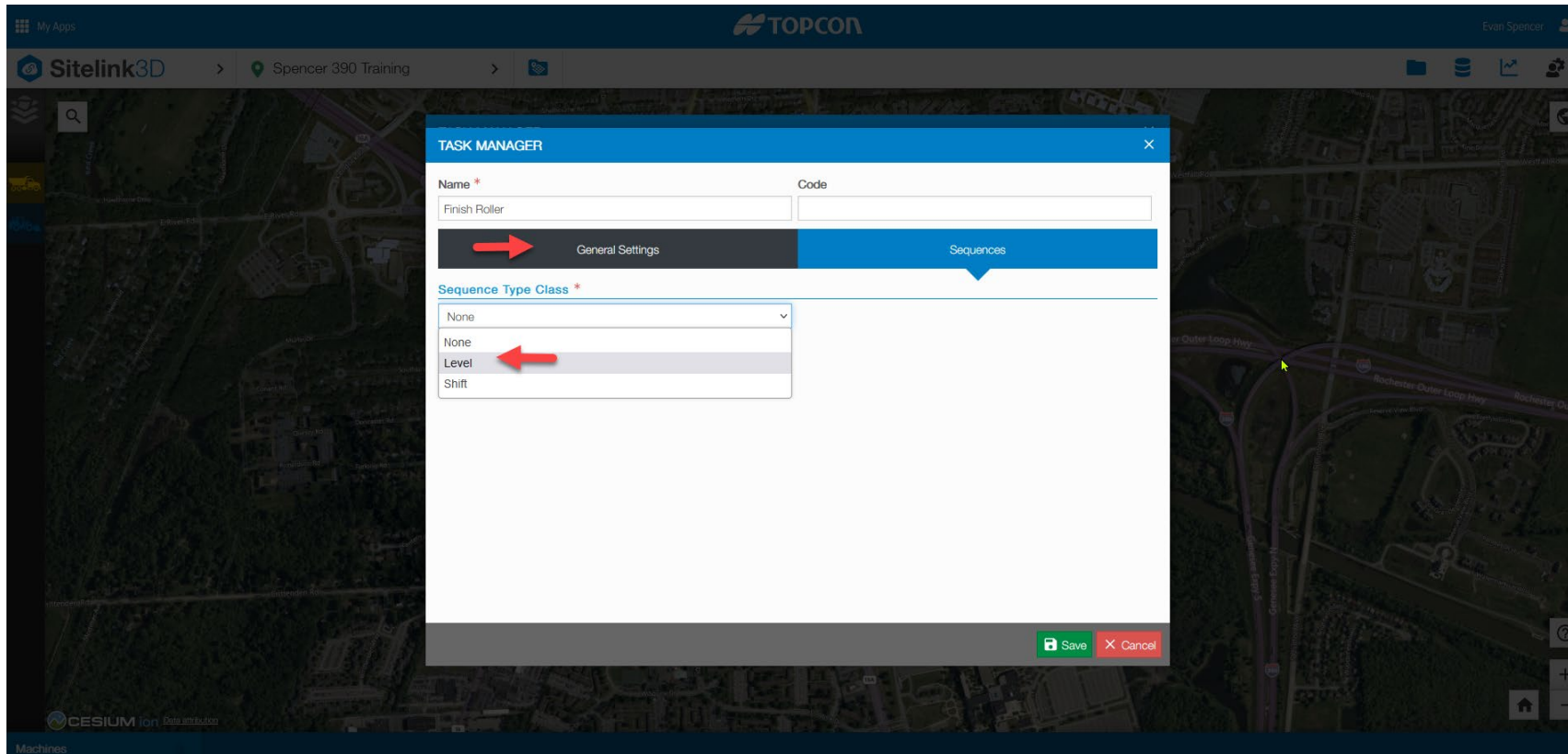
Task Setup

- Once you have the design set selected, click sequences



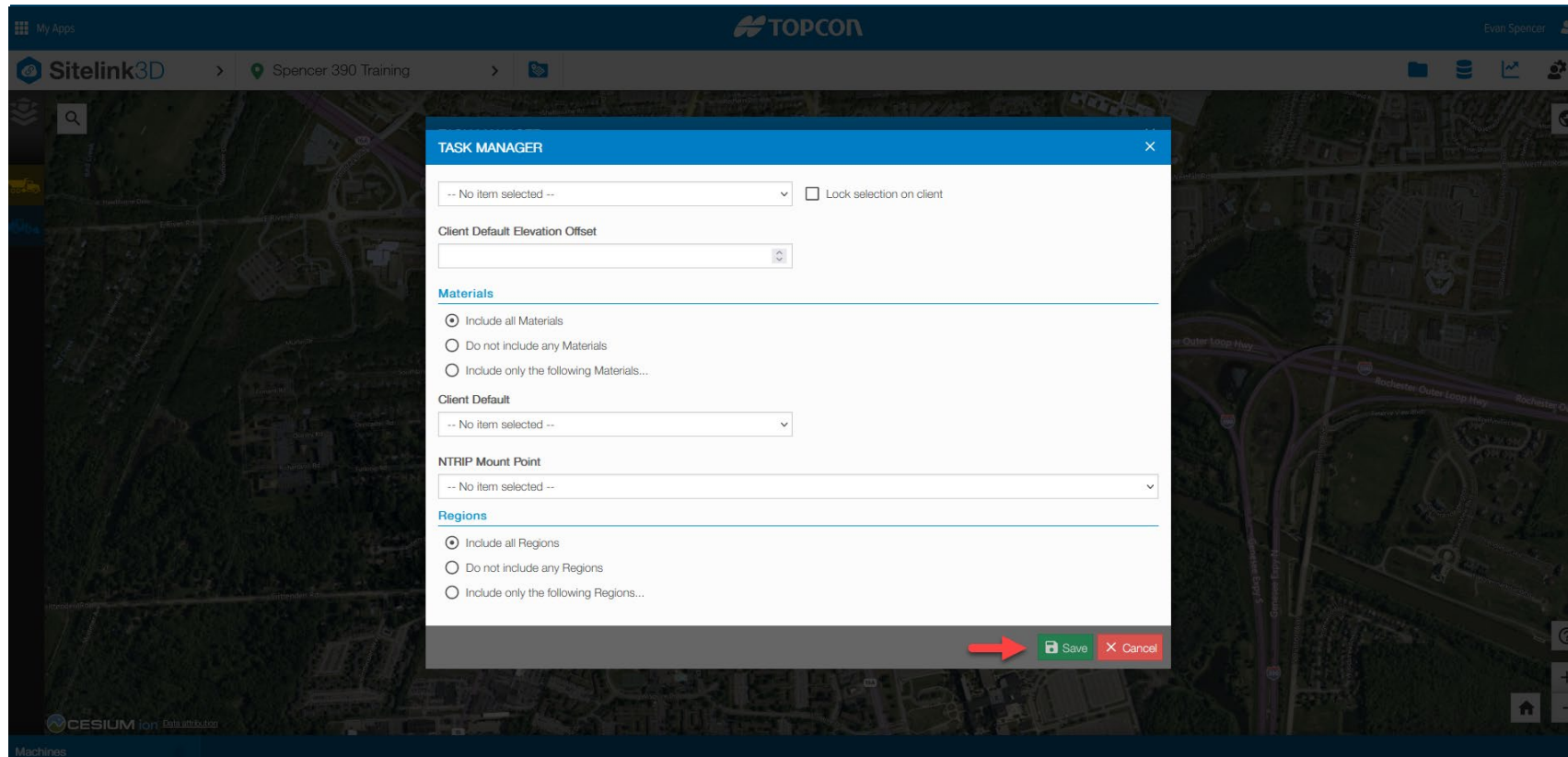
Task Setup

- Under sequence you must set the as-built type for this task. Always select level for Intelligent Compaction and then go back to general settings.



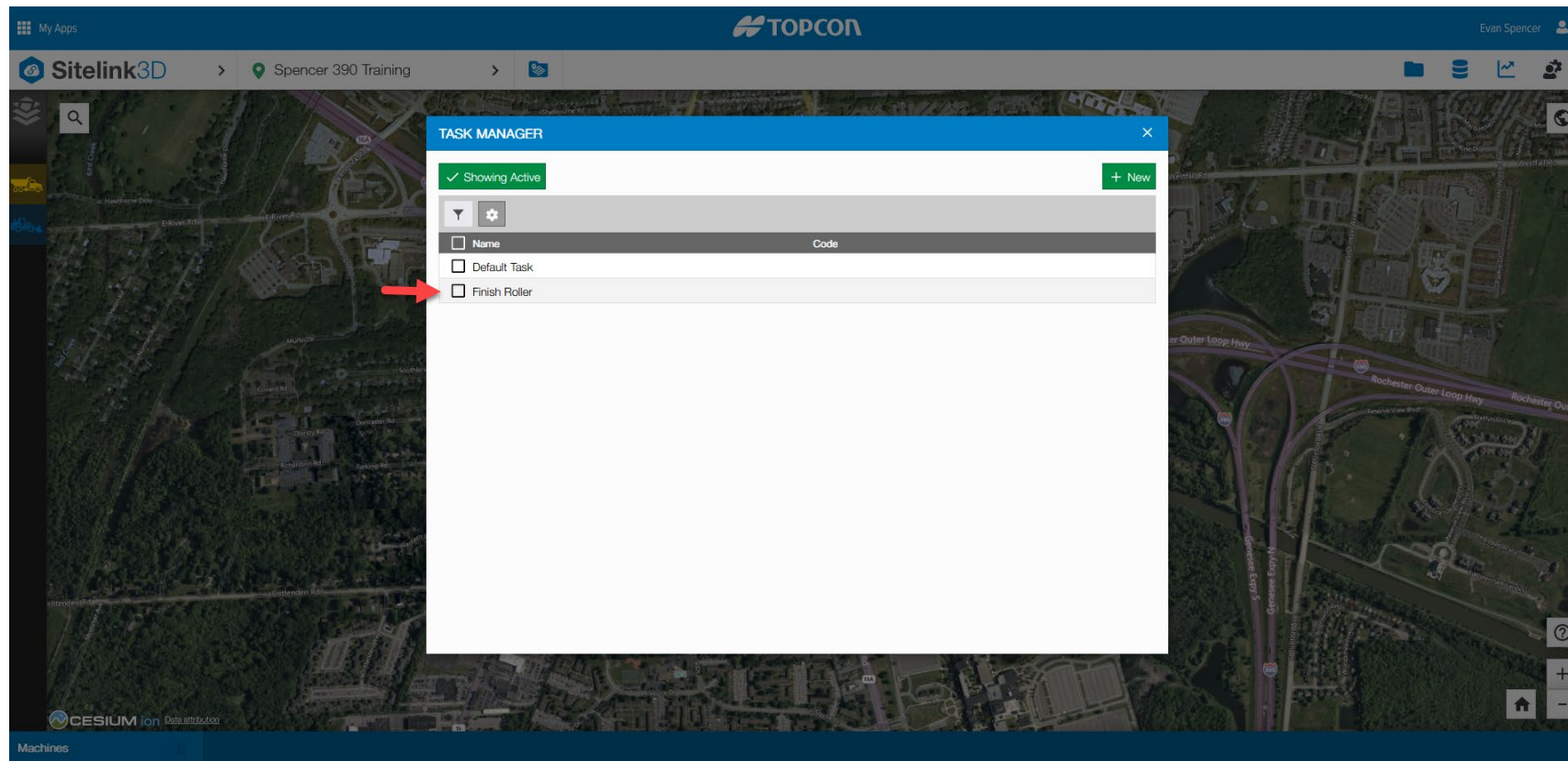
Task Setup

- Add materials, select your region and then click save.



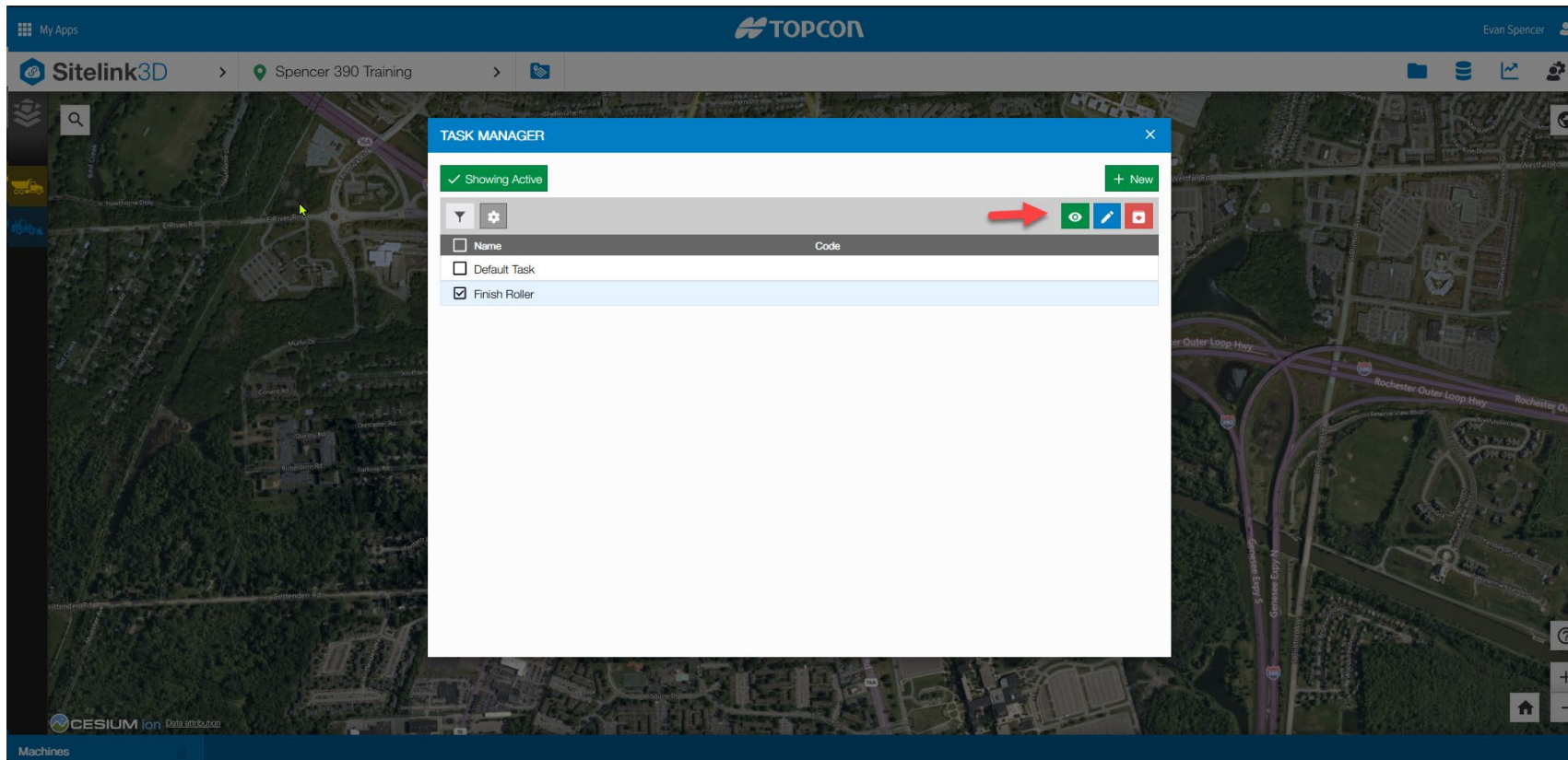
Task Setup

- Once saved the task manager window will pop up, this is where you select your task.



Task Setup

- In task manager select your task and click the eye to make it active.



Task Setup

- Now that you have a site, files imported, sequence, color maps selected and a task active your screen should look like this, and you are ready to get the machines online

