



# CONQUEST® 100

## Concrete scanning with GPR made simple

Cutting, coring or inspecting concrete structures?

Need to avoid dangerous and costly hits?

Looking for post-tension cables, conduits, rebar  
or live power cables?

If so, then CONQUEST 100 is the right GPR for you!



**CONQUEST® 100** is a light, portable device that provides a fast, non-invasive method to gain accurate insights of objects below the surface, even on a curved surface or column.



### **CONQUEST 100 reduces risk**

- Locate rebar, post-tension cables, metallic and non-metallic conduits embedded in concrete.
- Create detailed maps of concrete floors, decks, columns, walls and ceilings to detect embedded objects before cutting or coring.
- Detect voids beneath slab-on-grade/concrete.
- Locate and map current-carrying wires using Power Cable Detector (PCD) technology.

### **Increase comfort and versatility with the optional Deluxe Mobility Kit**

- Long reach resizable handle
- Wireless trigger for data collection
- Carrying harness
- Extra battery pack
- Desktop charger
- Additional cable

# CONQUEST 100 – Get rapid, reliable results and reduce the need for destructive testing



High visibility touch screen display unit  
Free lifetime system software updates  
User selectable languages  
US Standard and Metric units



On-site Reports  
Produce instant reports from your display unit in the field



USB  
USB for easy data transfer



Wi-Fi  
Built-in Wi-Fi capability



Li-Ion battery  
Minimize downtime with long-lasting swappable batteries



GPR Sensor  
Innovative ultra-wideband (UWB) GPR antenna  
DynaQ® – Dynamic Quality Auto Stacking to maximize data quality  
Depth penetration up to 910 mm or 36 inches



Odometer  
2 wheel drive optical encoder  
≤0.5 mm resolution



Power cable detector (PCD)  
Ensures safety by locating hazardous current-carrying cables in the survey area.



Screen capture function  
Transfer reports wirelessly via smartphone.

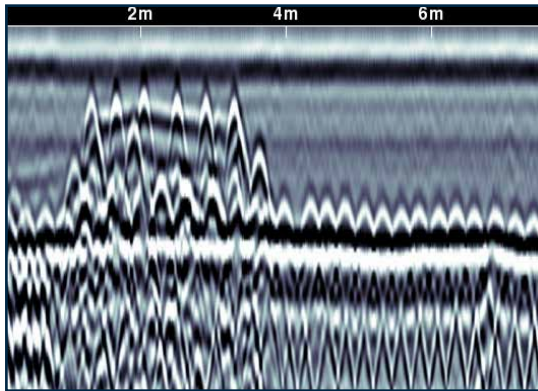


Lightweight sensor head  
Enables easy scanning of walls and ceilings.

# CONQUEST 100 features

## Line Scan:

Line Scans provide a real-time assessment of targets embedded in concrete.



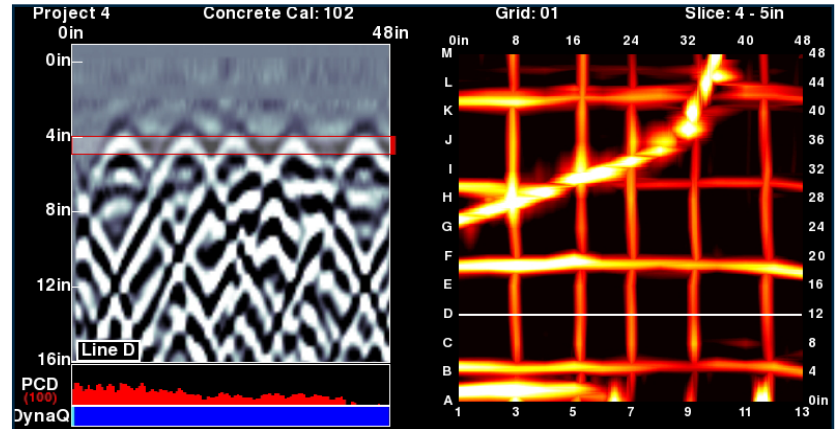
Classify targets in real time with color-coded field interpretations by simply touching the screen.

Display position and depth of targets with the touch of a finger.

Pinpoint targets with the backup arrow.

## Grid Scan Mode:

Grid Scan detailed mapping generates on-site 3D images to better visualize embedded objects. Multiple grid sizes available.



Detect current-carrying power lines with PCD and visualize in Line Scans and Grid Scans.

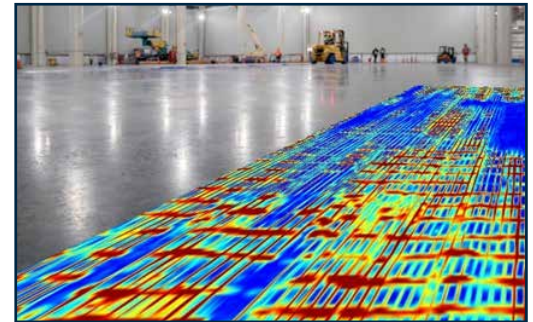
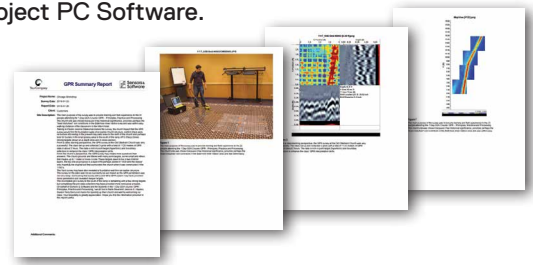
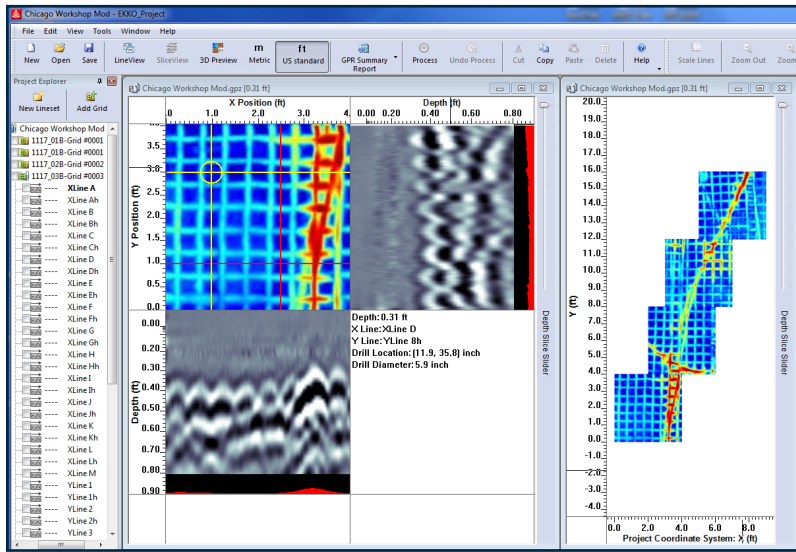
Use the Drill Locator, with variable drill bit diameters, to decide exactly where to drill, avoiding all embedded objects.

CONQUEST 100 Enhanced provides more projects and digital data (GPZ) output.

Criteria	CONQUEST 100	CONQUEST 100 Enhanced																
Data Export Format	Screenshots (.JPG)	Screenshots (.JPG), and Project (.GPZ) files																
File organization	Lines and Grids	Projects containing Lines, Grids & Screenshots																
Data Storage	1 Project with: 20 grids, 200 lines, 1000 screenshots	20 Projects with a total of 400 grids, 4000 lines, 20,000 screenshots																
Grid sizes	<table border="0"> <tr> <td>US Standard</td> <td>Metric</td> </tr> <tr> <td>24 x 24 in</td> <td>600 x 600 mm</td> </tr> <tr> <td>48 x 48 in</td> <td>1200 x 1200 mm</td> </tr> <tr> <td>48 x 24 in</td> <td>1200 x 600 mm</td> </tr> </table>	US Standard	Metric	24 x 24 in	600 x 600 mm	48 x 48 in	1200 x 1200 mm	48 x 24 in	1200 x 600 mm	<table border="0"> <tr> <td>US Standard</td> <td>Metric</td> </tr> <tr> <td>24 x 24 in</td> <td>600 x 600 mm</td> </tr> <tr> <td>48 x 48 in</td> <td>1200 x 1200 mm</td> </tr> <tr> <td>48 x 24 in</td> <td>1200 x 600 mm</td> </tr> </table>	US Standard	Metric	24 x 24 in	600 x 600 mm	48 x 48 in	1200 x 1200 mm	48 x 24 in	1200 x 600 mm
US Standard	Metric																	
24 x 24 in	600 x 600 mm																	
48 x 48 in	1200 x 1200 mm																	
48 x 24 in	1200 x 600 mm																	
US Standard	Metric																	
24 x 24 in	600 x 600 mm																	
48 x 48 in	1200 x 1200 mm																	
48 x 24 in	1200 x 600 mm																	
PC-based data display	Any .JPG viewing software	Post process GPR data using optional EKKO_Project™ software																

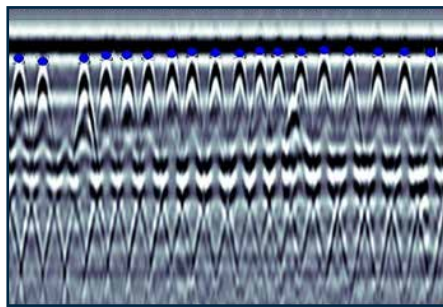
# EKKO\_Project Software

Visualize, Understand and Report your GPR results with the optional EKKO\_Project PC Software.

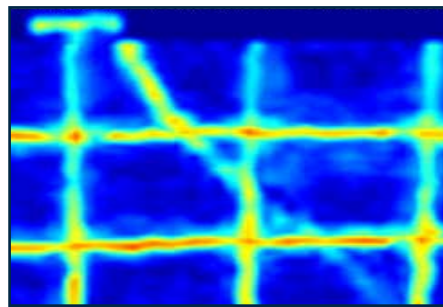


## Core

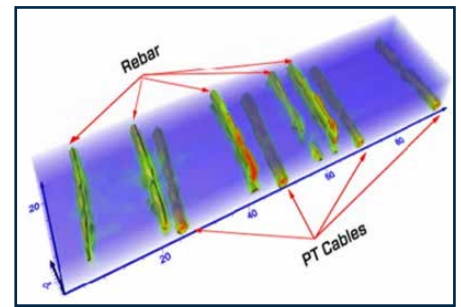
Organize your GPR data, photos and other files and save as a single project file. Easily create PDF reports of your findings.



Examine (Cross-sections)



Reveal (Depth Slices)



3D Reveal (3D Visualization)

## Specifications – Hardware

Category	Display unit	Sensor head	Transport case
Size	24 x 24 x 14 cm (9.5 x 9.5 x 5.5 inches)	15 x 13 x 19 cm (5.9 x 5.2 x 7.5 inches)	56 x 46 x 27 cm (22 x 18 x 10.5 inches)
Weight	Display: 2.88 kg (6.35 lbs) Battery: 0.49 kg (1.08 lbs)	1.10 kg (2.43 lbs)	7.9 kg (17.5 lbs)
Power Cable Detector	Locates current at 50 Hz or 60 Hz		
Power	Li-Ion battery pack (user swappable), battery life: 4-6 hrs, battery capacity: 9 Ah, AC mains adapter (100-240 V) to power system		
View Depth	User Defined: 30 – 91 cm (12 – 36 in)		
Maximum Line Length	50 m (150 ft)		

Regulatory Standards: Meets FCC 15.509, Industry Canada RSS-220, ETSI EN-302066

## Useful resources to make the most of your CONQUEST 100:

- [CONQUEST 100 training videos](#)
- [Concrete Scanning with GPR, interactive and online course \(SensoftU.com\)](#)
- [Webinars and free online resources](#)
- [Learn more about our training offerings](#)

## Our Mission

Provide best in class equipment and solutions, to prevent damage to critical infrastructure, manage assets and protect lives.

## Our Vision

To be the world's leader in the management of critical infrastructure and utilities.

## Our Locations



### USA

Raymond, ME  
Kearneysville, WV

### Canada

Mississauga, ON



### Europe

United Kingdom **HQ**  
France  
Germany  
The Netherlands



### Asia Pacific

India  
China  
Hong Kong  
Indonesia  
Australia

[www.sensoft.ca](http://www.sensoft.ca)



CONTACT US

