

SENSORS & SOFTWARE® 
from RADIODETECTION

LMX100™

Utility locating with GPR made simple

Trying to avoid dangerous and costly hits
to critical utilities?

Want to find more utilities at your job site?

Non-metallic utilities without tracer wires
giving you trouble?

If so, then LMX100™ is the right GPR for you.

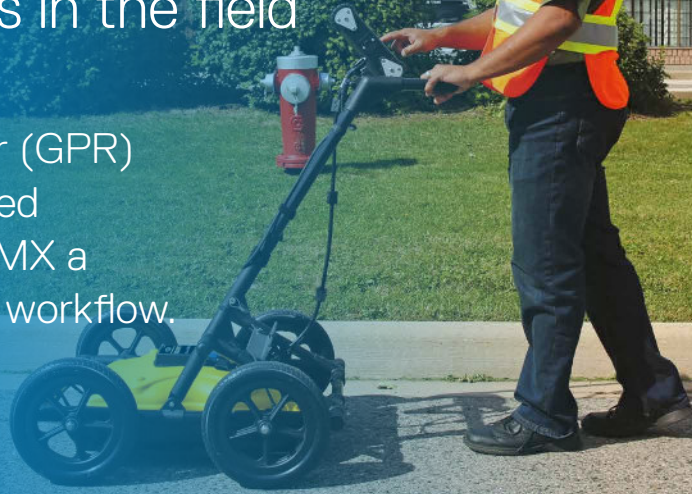
SPX 
TECHNOLOGIES



LMX100™ overview

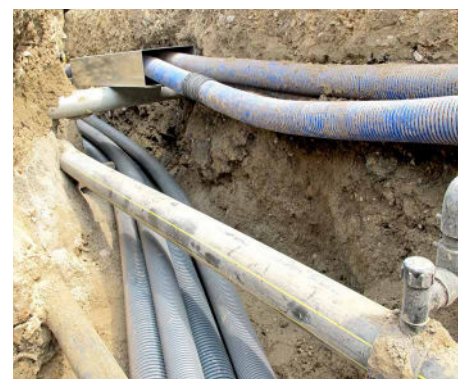
The simple, efficient way to **Locate & Mark™** utilities in the field

LMX® Ground Penetrating Radar (GPR) systems are designed & optimized for utility locating, making the LMX a natural addition to your locating workflow.



LMX GPR systems complement traditional pipe and cable locators and allow you to Locate & Mark:

- Metal utilities, including pipes and cables
- Non-metallic pipes, including PVC and asbestos cement
- Concrete storm and sewer systems
- Utilities where installed tracer wiring has failed
- Underground storage tanks and drainage tiles
- Septic system components
- Non-utility structures such as vaults, foundation walls and concrete pads



LMX100 features

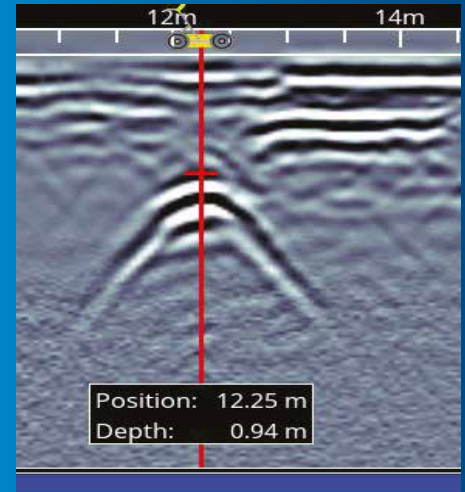
Rapidly locate **metallic**
and **non-metallic** utilities

Enhance your productivity

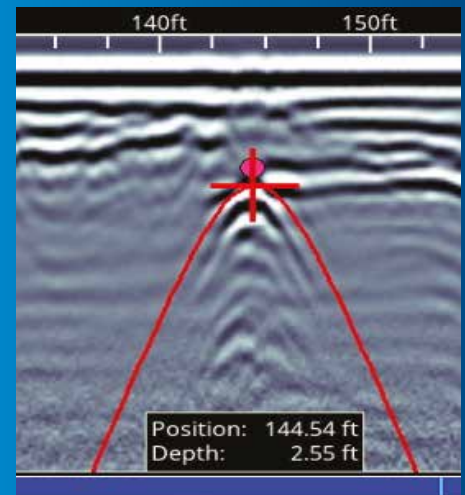
No complex settings – Just press Start and push the cart



Pinpoint Depth & Location



Easy Depth Calibration



Use hyperbola-fitting to ensure accurate depth measurements and backup over the target to display its location and depth.

Dynamic Stacking (DynaQ®)

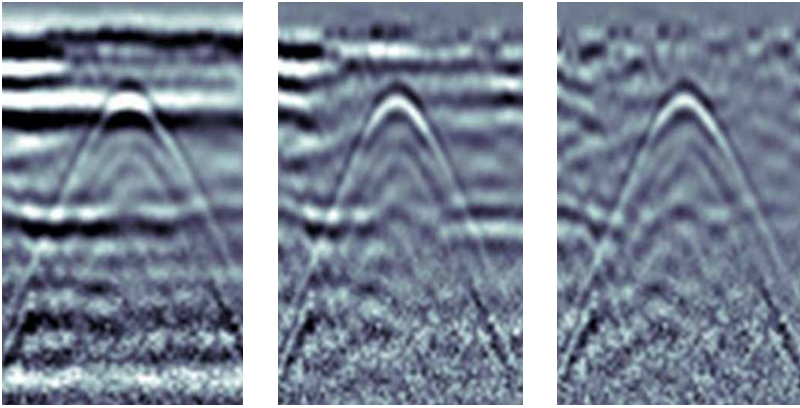


Better data quality with DynaQ. The LMX automatically adjusts stacking (averaging) based on your survey speed.

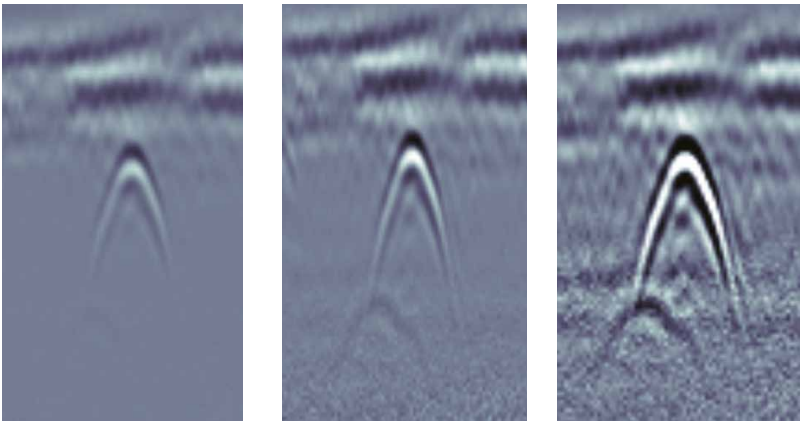
- White = No data (too fast!)
- Yellow = Moderate quality
- Light blue = Better quality
- Dark blue = Highest quality

Increase your target confidence in the field with image optimization

Preset Filters

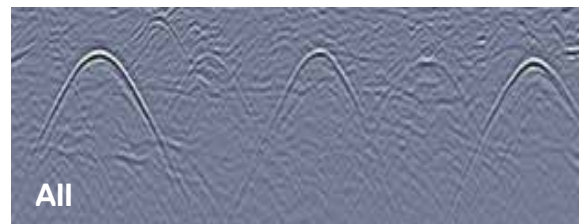
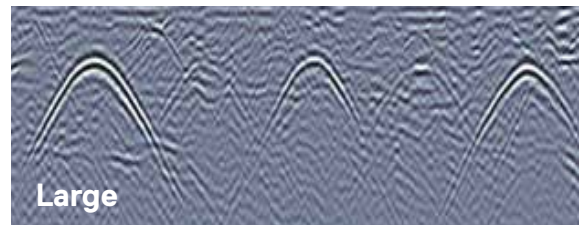
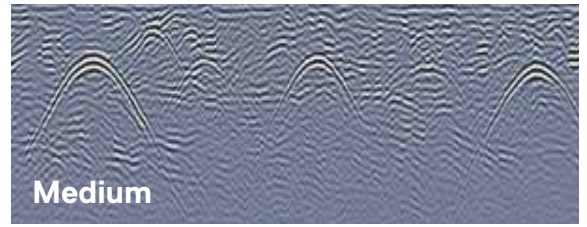
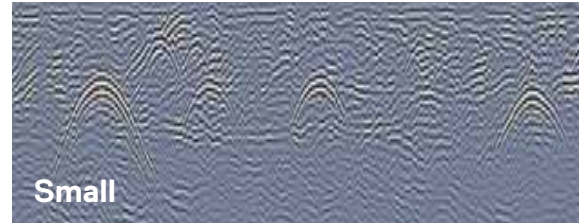


Adjustable Gain



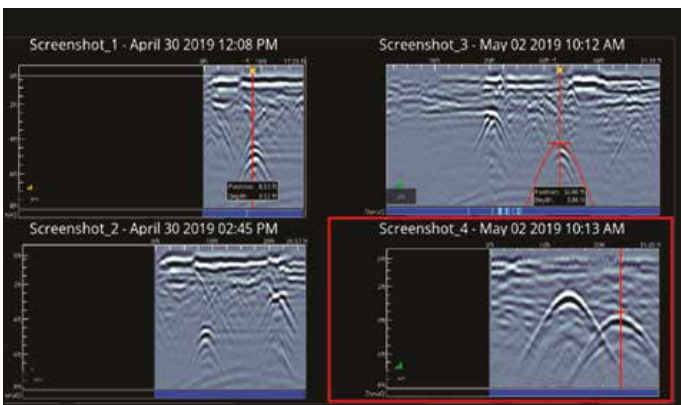
Optimize visibility of your targets with preset filters & gain.

Dynamic Target Enhancement (DynaT™)



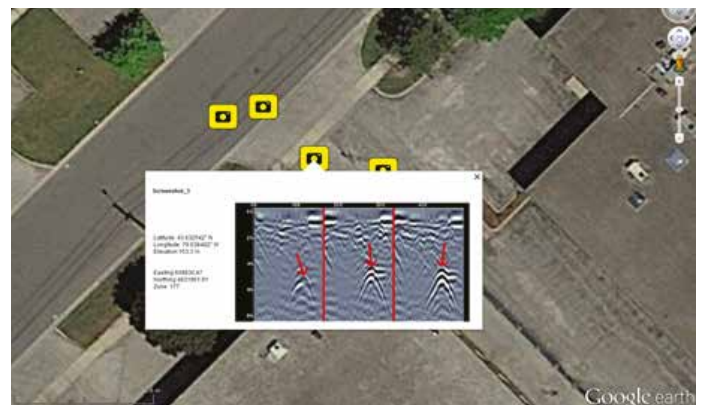
Enhance small, medium & large targets.

Get faster deliverables



In-field Screenshot Gallery & Wi-Fi mini-reports

Manage & review your screenshots and email them in a Wi-Fi mini-report from the field to share key collection information and images.



Geo-tagged information for reports & archiving

All screenshots are geo-tagged and exported in a KMZ file that is easily displayed in Google Earth.™



High visibility touch screen display unit

- Free lifetime system software updates
- User selectable languages
- US Standard and Metric units



Lightweight Fiberglass Cart Frame

- No metal parts that would interfere with GPR signals
- Rugged, maneuverable, all-terrain cart



On-site Reports

- Produce instant on-site reports from your display unit



Lead Acid Gel Cell Battery

- Long lasting
- Swappable
- Locally available



USB

- USB for easy data transfer



Integrated GPS

- Integrated GPS receiver for geo-referencing data



Wi-Fi

- Built-in Wi-Fi capability



GPR Sensor

- Patented ultra-wideband (UWB) 250 MHz GPR antenna
- DynaT for Dynamic Target enhancement
- Offers perfect balance of depth penetration (up to 8 m/26 ft) & high resolution



Odometer

- To collect data at equal intervals



Weight & Dimensions	
Size: 100 x 70 x 115 cm (39.4 x 27.6 x 45.3 in)	
Weight: 22 kg (48 lbs)	
Display Unit size: 21 cm (8 in) diagonal	
Power	
12 volt sealed lead acid gel cell	
Battery Capacity: 9.0 Ah	Battery Weight: 3.6 kg (7.9 lbs)
Battery Life: 4-6 hours	Charger: 110-240V

Environmental & Temperatures	
Ruggedized, environmentally sealed unit and connections	
IP65	Operating temperature range: -40°C to +50°C (-104°F to 122°F)
Regulatory Specifications	
Meets FCC 15.509, IC RSS-220 and ETSI EN-302066	
Data Storage	Depth
10,000+ screenshots	Up to 8 meters (25 feet)

Useful resources to make the most of your LMX:

- [LMX100 training videos](#)
- [Utility Locating with GPR \(Nulca-accredited\) interactive and online course \(SensoftU.com\)](#)
- [Webinars and free online resources](#)
- [Learn more about our training offerings](#)

Our Mission

Provide best in class equipment and solutions, to prevent damage to critical infrastructure, manage assets and protect lives.

Our Vision

To be the world's leader in the management of critical infrastructure and utilities.

Our Locations



USA

Raymond, ME
Kearneysville, WV

Canada

Mississauga, ON



Europe

United Kingdom **HQ**
France
Germany
The Netherlands



Asia Pacific

India
China
Hong Kong
Indonesia
Australia

Visit: www.sensoft.ca Follow us on:    

CONTACT US

