



Parts list

- SWARM Sound monitor
- Power cable
- Power adapter
- Band clamp
- Instructions prior to first use

INSTRUCTIONS PRIOR TO FIRST USE

Product innovations over the air

The first time you power up your SWARM Sound, the SWARM Sound will look for the latest product innovations to download. Within a few minutes the SWARM Sound is up-to-date and ready to use. Update status and download progress for the latest firmware can be viewed in the last contact column on your Honeycomb overview page. How to create a Honeycomb account is explained below under the section “Set up your SWARM Sound monitor”.

Requirements

Honeycomb subscription.

Honeycomb account.

WiFi or LTE/ 4G access.

Acceptance of the terms of the license agreement, when creating a new account on: <https://honeycomb.omnidots.com>

Wide range power input from 5V to 57V.

Important notices

Omnidots' hardware product is warranted against defects in materials and workmanship for a period of two (2) years from the date of original purchase, and only when used in accordance with Omnidots' user manuals and instructions.

The SWARM Sound has a IP65 rated enclosure. The provided SWARM Sound power adapter is not intended for outdoor use. We recommend using a waterproof casing or the Omnidots battery pack.

The SWARM Sound should never be opened. Only an Omnidots' certified facility can do so.



Scan to download the Quick Start Guide in another language.

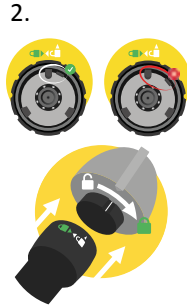


SET UP YOUR SWARM SOUND MONITOR



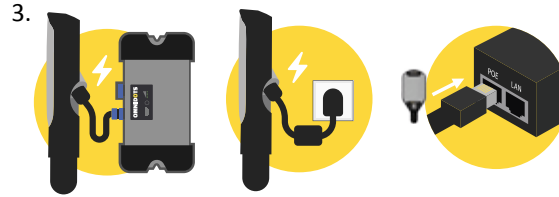
Mount the SWARM

Mount the SWARM Sound on a pole using the band clamp or backplate, or attach the SWARM Sound on a tripod using the 3/8" UNC thread. Make sure the microphone is pointing down or horizontal.



Connect cable to SWARM

Before plugging the connector in the SWARM Sound, make sure the locking ring is turned counter clockwise. Push the connector into the SWARM Sound and lock it in place by turning the locking ring clockwise.



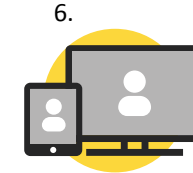
Power SWARM

Connect the SWARM Sound to a SWARM Battery or use the provided power adapter. When using the power adapter, make sure to connect the SWARM Sound to the PoE Port.



Wait until connected

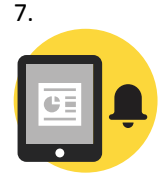
The LED lights will begin the startup sequence, after this the SWARM Sound will try to connect via chosen GSM, WiFi or PoE. Watch the different status animations on <https://support.omnidots.com/swarm-sound-status-lights>



Create account

Go to:

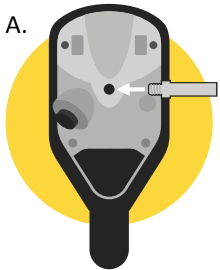
<https://honeycomb.omnidots.com/>



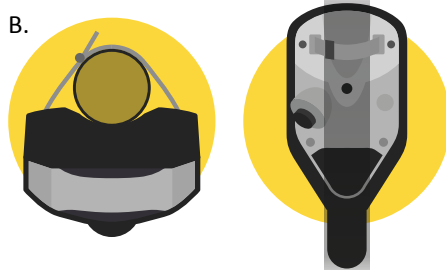
Create a measuring point for your SWARM Sound

Choose the settings you require for your noise monitoring project. You can now monitor and check the measured data on the Honeycomb platform.

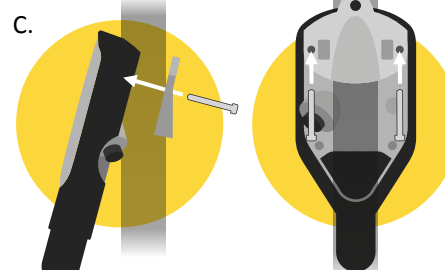
INSTALLING YOUR SWARM SOUND MONITOR



Attach the SWARM Sound on a tripod using the standardized 3/8" UNC thread.



Attach the SWARM Sound to a pole using the provided band clamp.



Attach the SWARM Sound to a pole using a backplate and two screws.

⚠ Keep the following in mind when using screws on the SWARM Sound, or the device will be damaged!

Pole diameter max 60mm -> screw M4
 Max. mounting screw length = pole diameter + 15 mm
 Min. mounting screw length = pole diameter
 You can use safety screws
 The provided screws are m4x30

For example, traffic sign pole of 48mm requires:
 Min. M4x50 or m4x60



Please check Omnidots' support center for more information and online tutorials:
<https://support.omnidots.com>

No power source available? The SWARM Battery can power your SWARM up to six weeks.

It's a surprisingly small and handy battery and is IP65 rated. This battery can charge while powering and continue uninterrupted measurements.



Check out the SWARM Battery